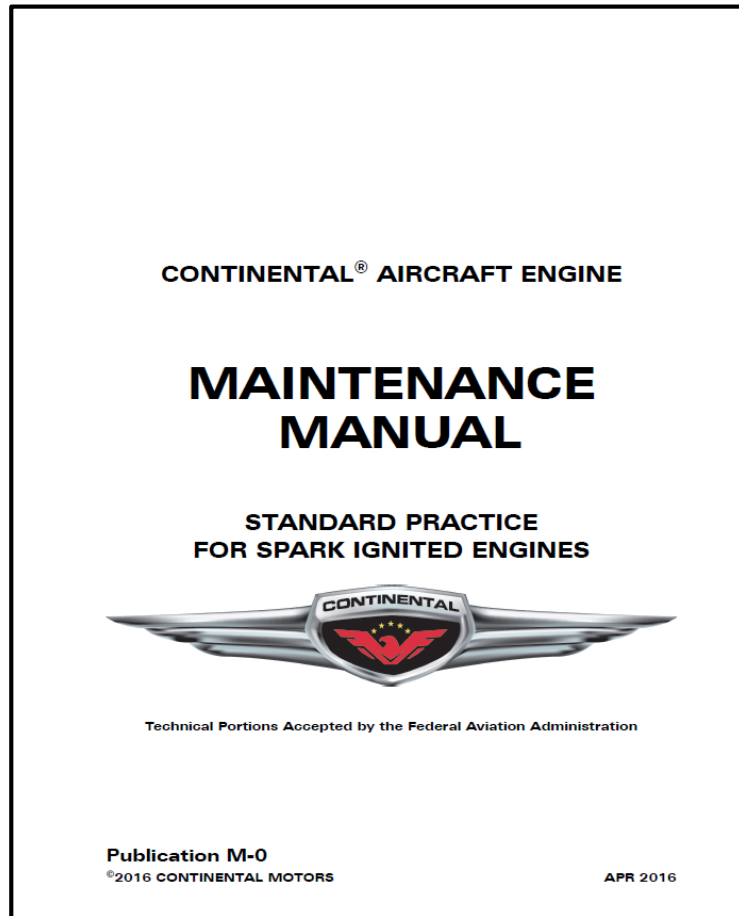


Reference Material - Continental Service Bulletins



6-4.11. Cylinder Inspections

A complete cylinder inspection entails the tasks described in the respective sections Table 6-19 below. Performing all of the tasks in Table 6-19 ensures items that can affect cylinder operation have been inspected and verified for proper operation. Use a copy of the "Cylinder Inspection Checklist" on page 6-171 to record inspection progress and findings.

Table 6-19. Cylinder Inspection Tasks and References

| Task ¹ | Section Reference |
|---|-------------------|
| Cylinder visual inspection | Section 6-4.11.1 |
| Check cylinder differential pressure | Section 6-4.11.2 |
| Inspect engine cylinders with borescope | Section 6-4.11.3 |
| Inspect cylinder to crankcase mounting deck | Section 6-4.11.4 |
| Inspect baffles | Section 6-4.11.5 |
| Inspect cowling | Section 6-4.11.6 |

1. All tasks in this table must be performed for a complete cylinder inspection.

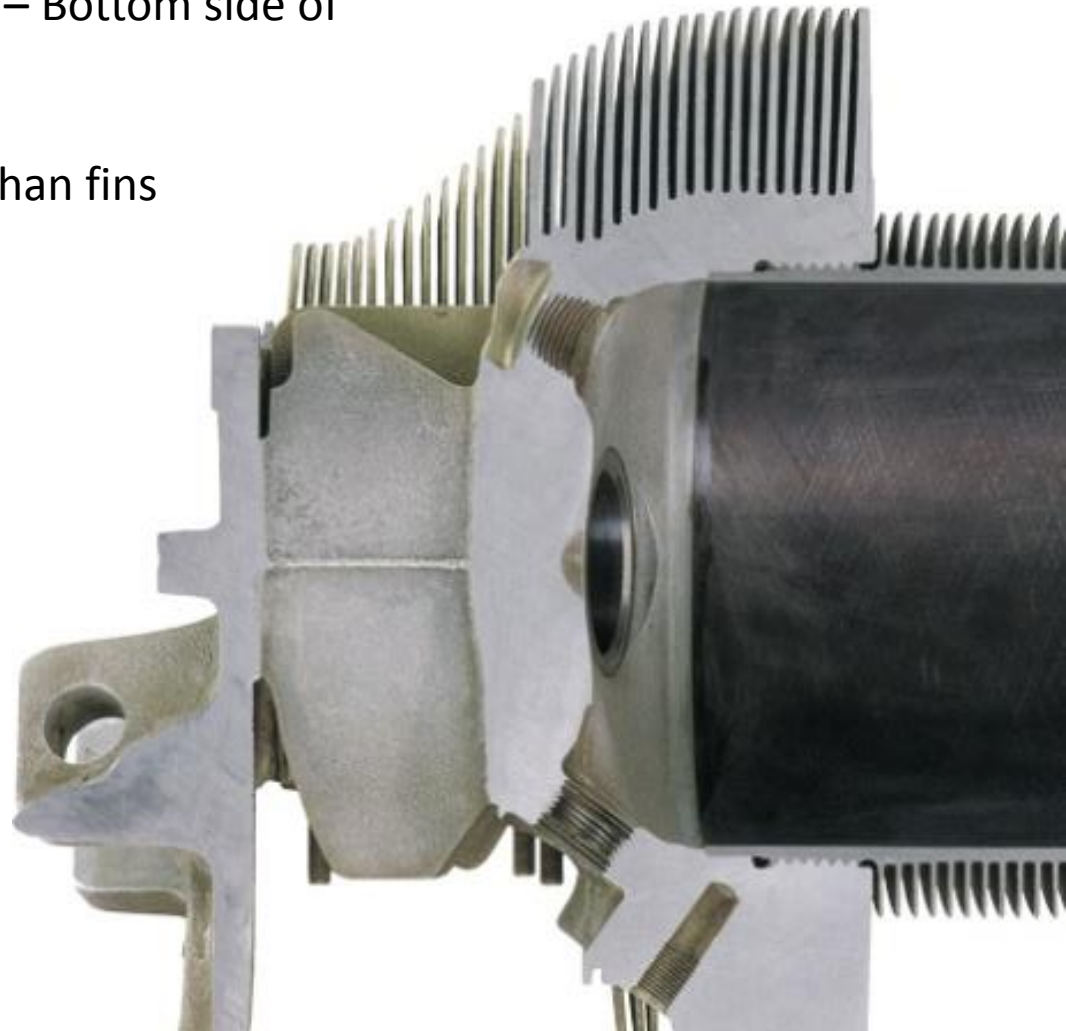
In addition to the instructions contained in this section, reference the following Service Documents to determine compliance requirements, based on engine model applicability.

Table 6-20. Additional Cylinder Service Document References

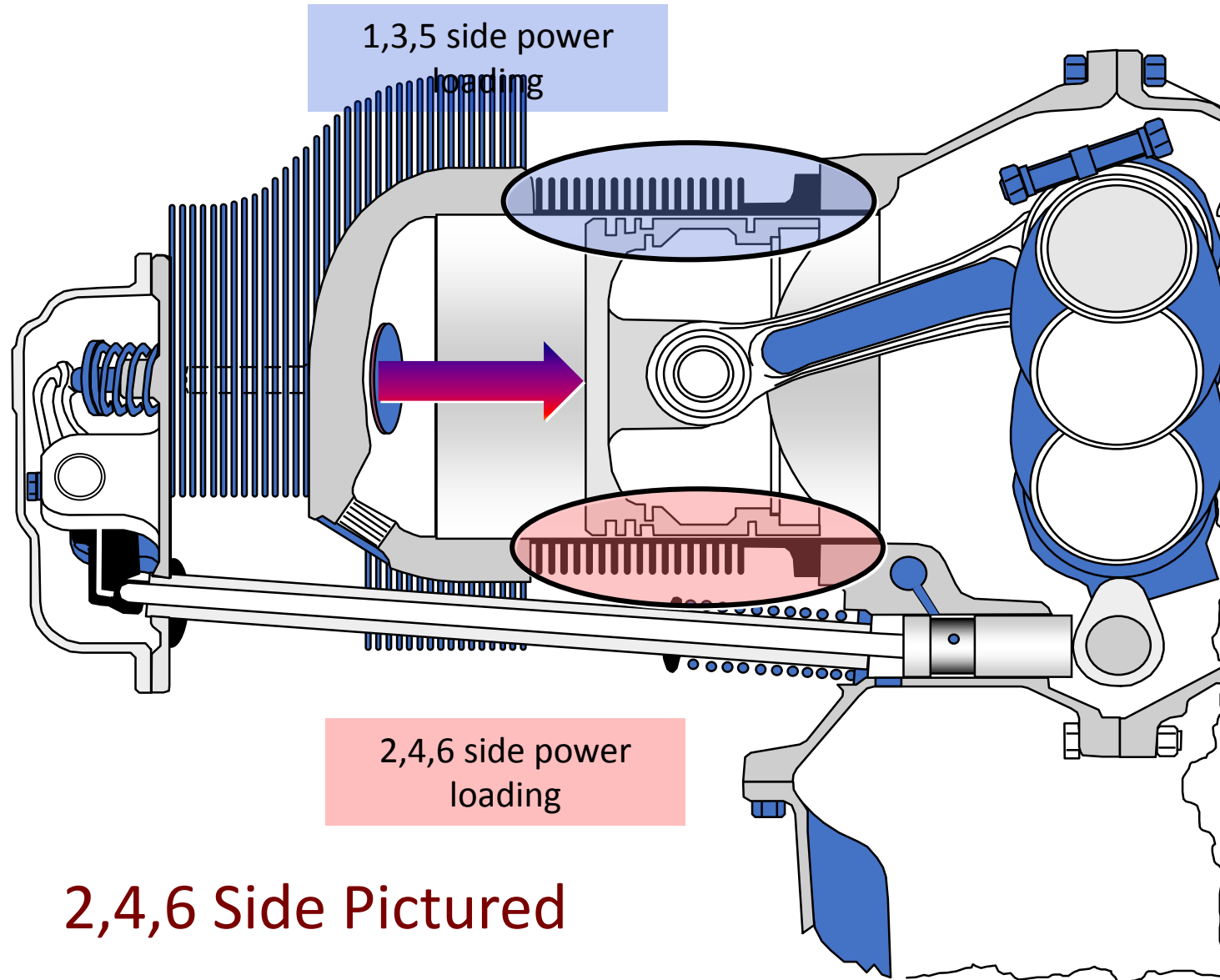
| Document Number | Title |
|-----------------|--|
| M92-8 | Application of 4 -1/16 inch Diameter Cylinder Assemblies |
| M92-6 | Rocker Shaft Retention Improvement for Inclined Valve Cylinder |
| M92-4 | IO & L/T/SIO-360 Rocker Shaft Stud Inspection |
| M91-7 | Cylinder Barrel Ultrasonic Inspection |
| M91-6 | Cylinder Barrel Inspection |
| M73-13 | Rocker Shaft Bosses |
| M73-2 | Cylinder, Non - H FAA AD #72-20-02 |

M-O, Section 6.6 11.1 Visual Cylinder Condition

- Power stroke area of cylinder barrel – Bottom side of 2-4-6 side, top side of 1-3-5
- Remaining cylinder barrel fins
- All external barrel surfaces – other than fins
- Nut seat areas
- Cylinder head
- Head to barrel junction

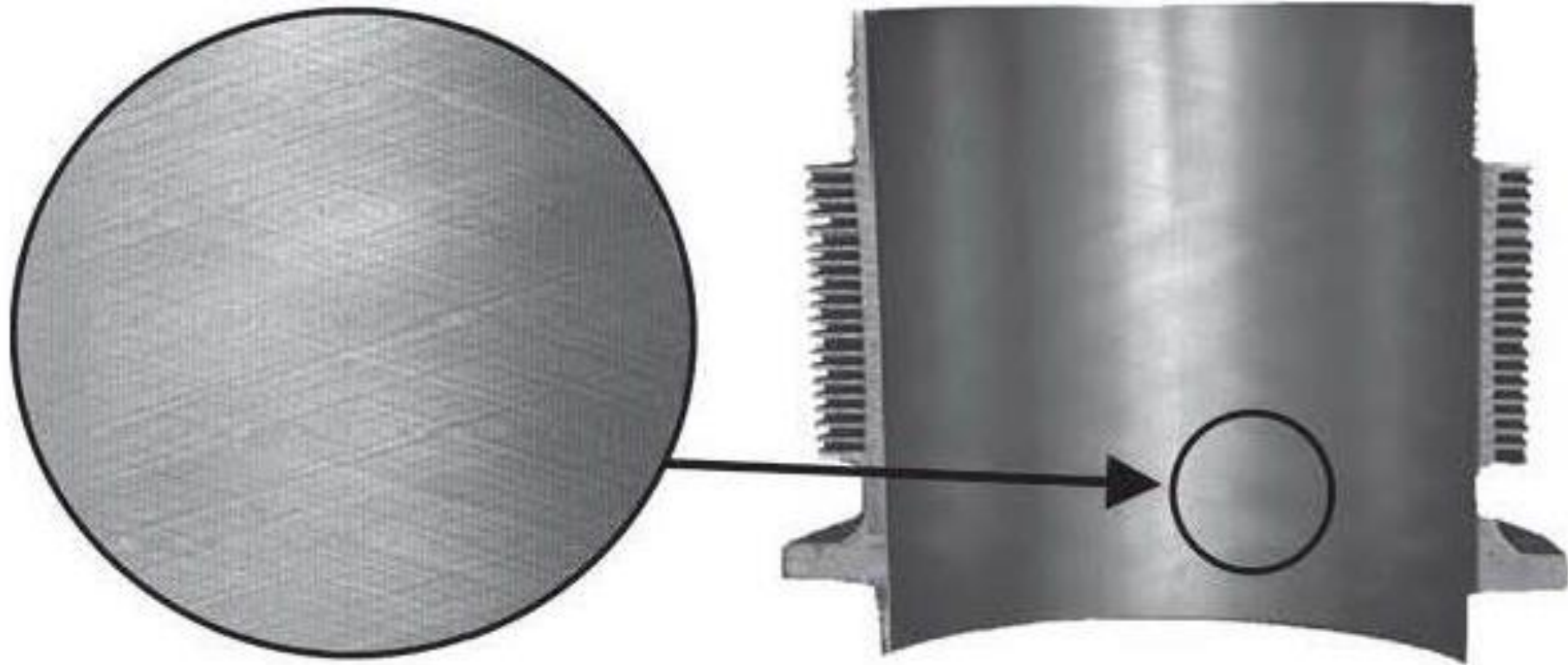


Power Loading



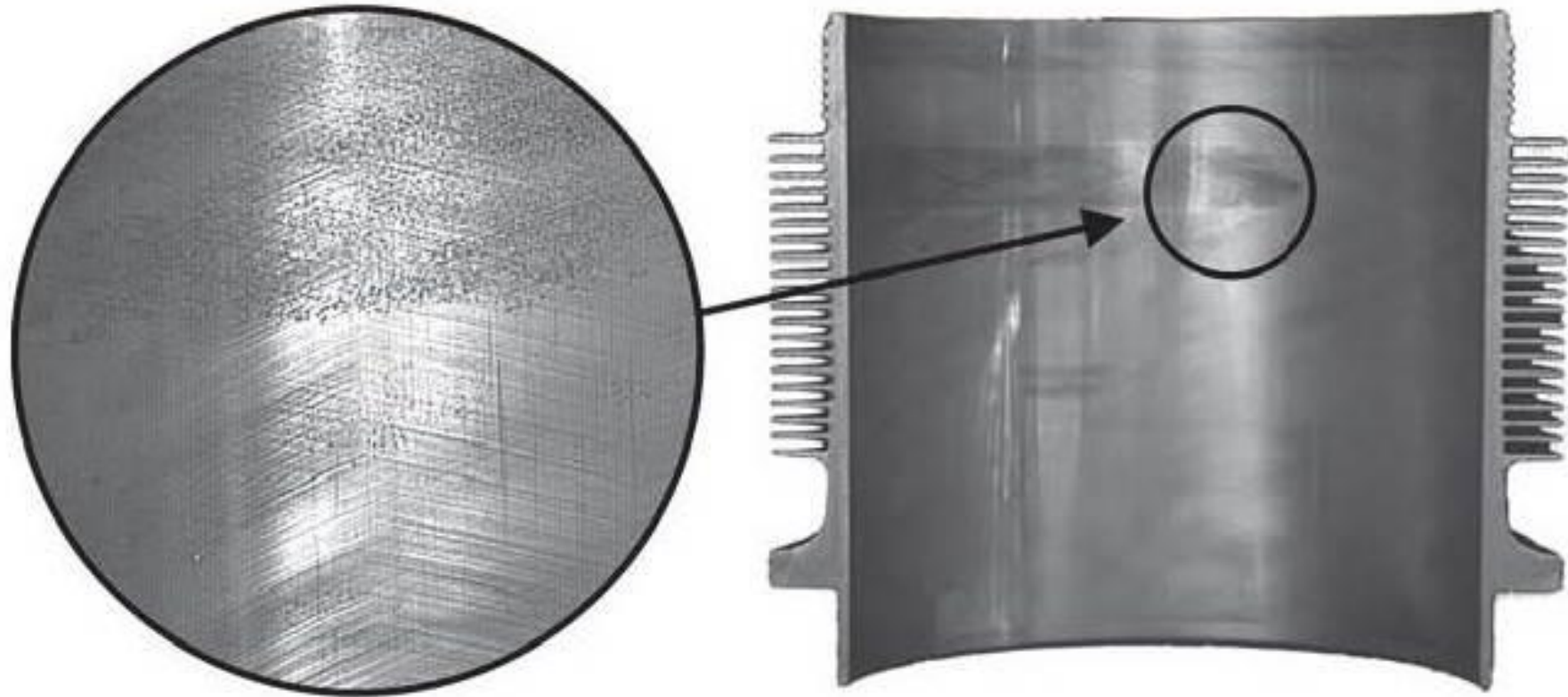
2,4,6 Side Pictured

Cylinder Bore Inspection



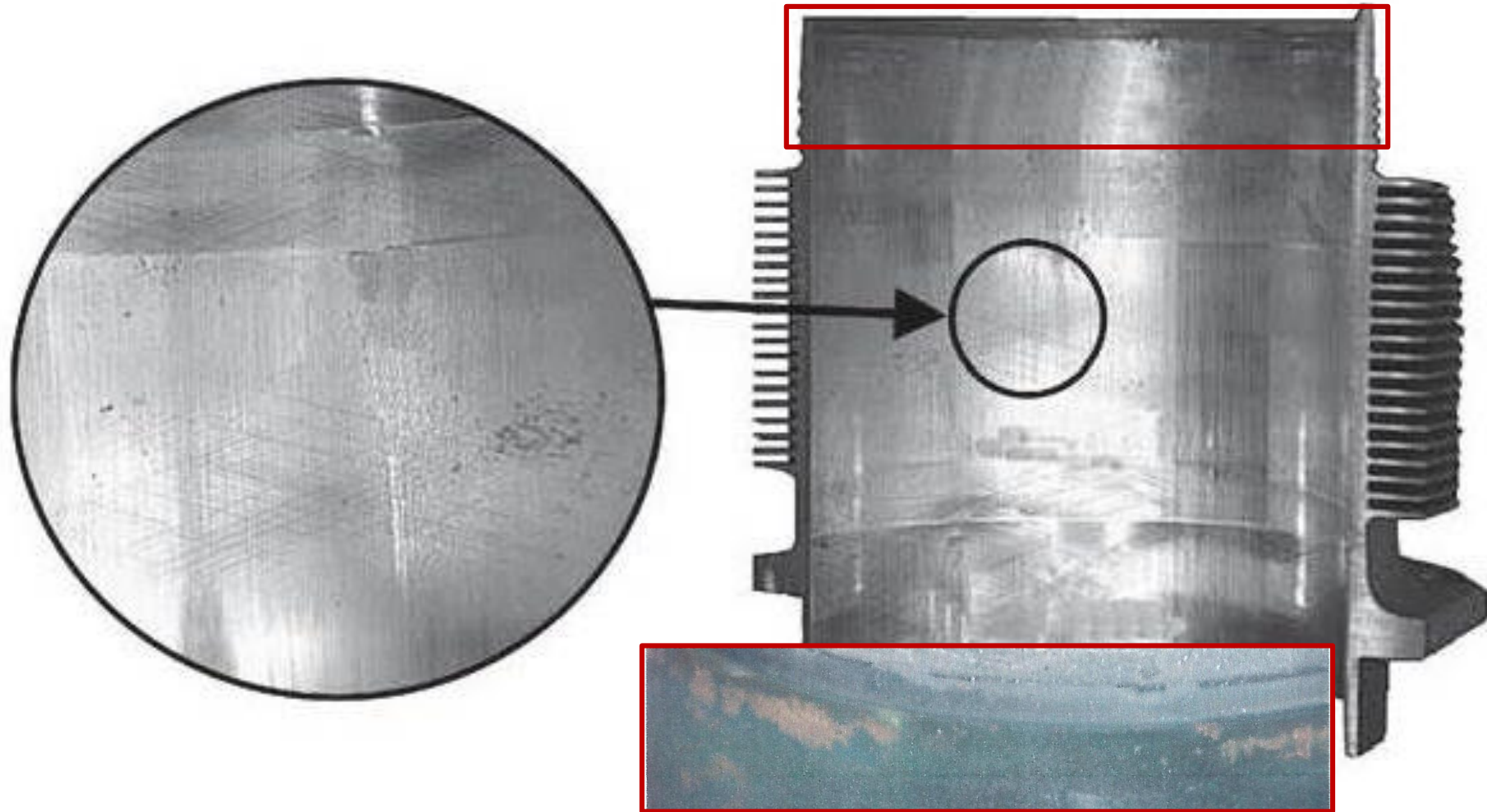
New Steel Cylinder Bore

Cylinder Bore Inspection



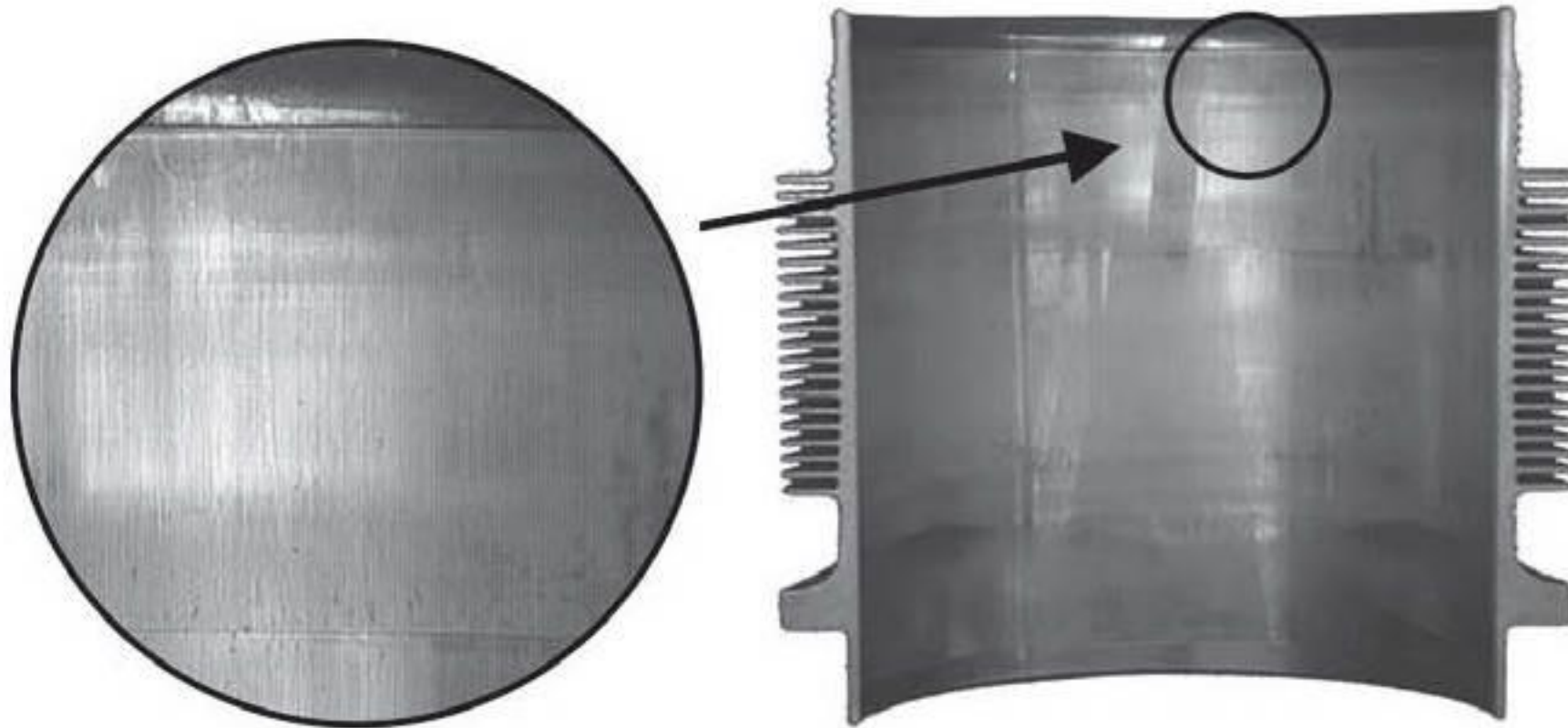
Light Rust Formation, Hone Not Affected

Cylinder Bore Inspection



Typical Cylinder Bore At TBO

Cylinder Bore Inspection



Heavily Worn Cylinder Bore

Cylinder Bore Inspection



Normal Combustion Chamber. Exhaust valve has reddish combustion deposit in center with dark outer edge. Intake valve has light brown combustion deposits. Combustion chamber has light brown deposits.

Cylinder Bore Inspection



Burned exhaust valve. Note edge of valve face that has lost all combustion residue and striations moving toward center of valve.



Burned Exhaust Valve